

1. The Problem of Disagreement

Kevin Dorst (He/Him)
kevindorst@pitt.edu

PHIL 1460
August 30, 2021

Homophily: people tend to be similar to their friends.

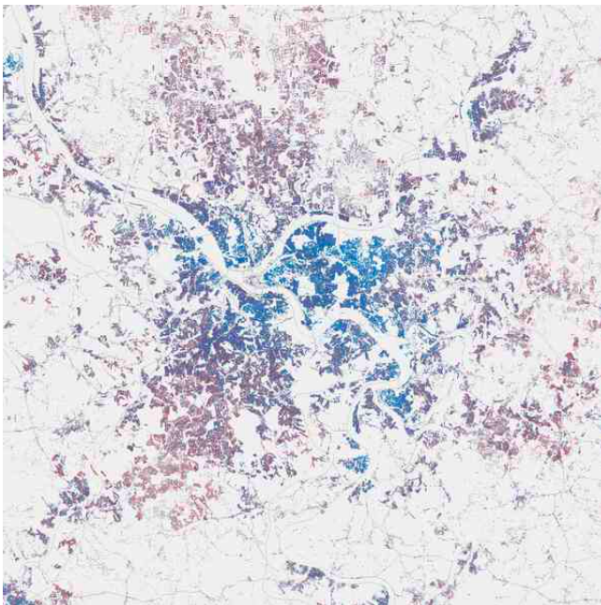
"Birds of a feather flock together"

Deane and Gramlich 2020: Massive disagreements.

- Biden vs. Trump vote: 51% to 47%.
- Is climate change important?
Biden-voters: 68%; Trump-voters: 11%.
- Is life harder for Black people?
Biden-voters: 74%; Trump-voters: 9%.

More specifically: *local* agreement, *global* disagreement:

Brown and Enos 2021



Causes of homophily:

- *Selection*: we choose friends who are similar to us.
- *Influence*: our friends change us.

How should we react to these facts?

References

- Brown, Jacob R and Enos, Ryan D, 2021. 'The measurement of partisan sorting for 180 million voters'. *Nature Human Behaviour*, 1–11.
- Deane, Claudia and Gramlich, John, 2020. '2020 election reveals two broad voting coalitions fundamentally at odds'. Technical report.